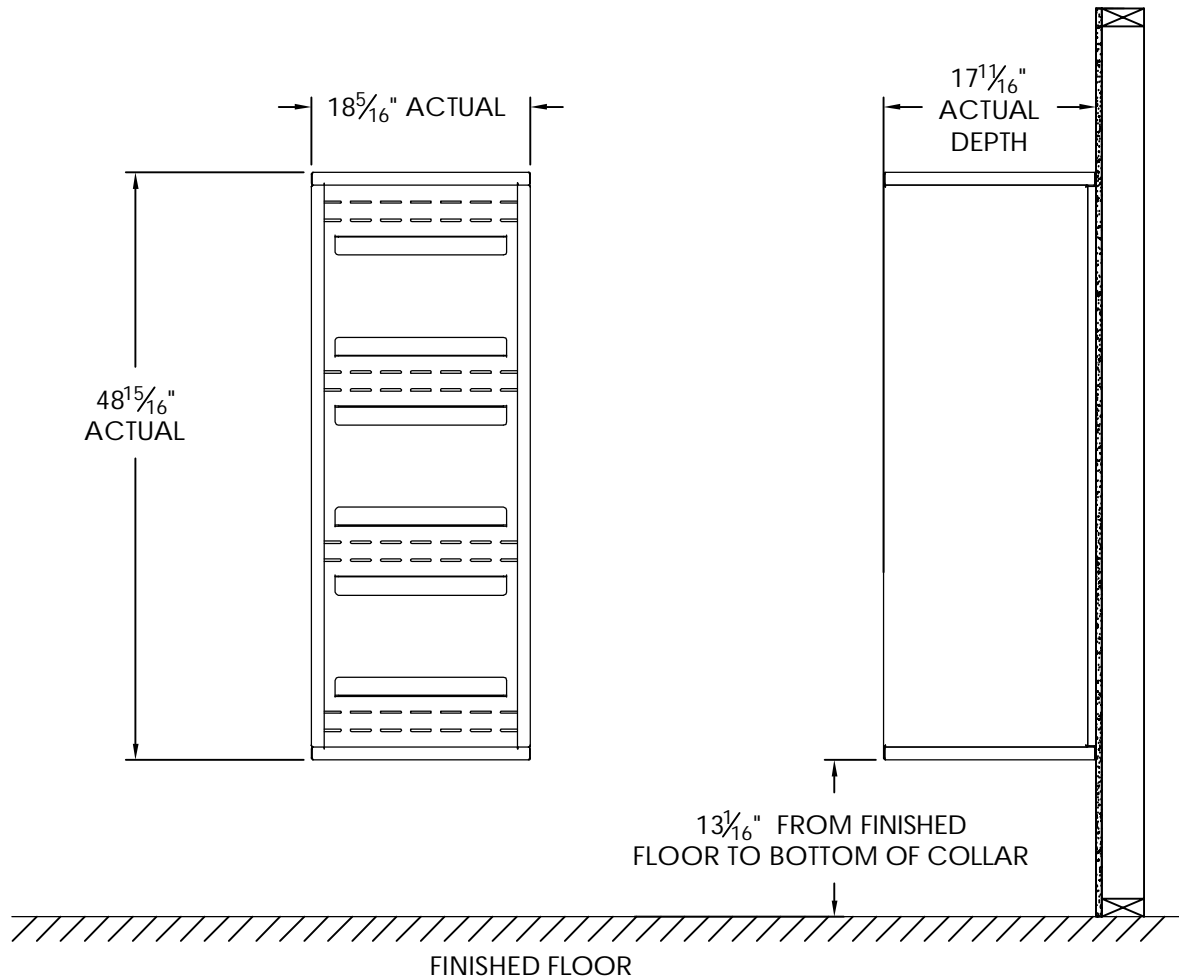


versatile™ 4C Surface Mount Collar, SM13S



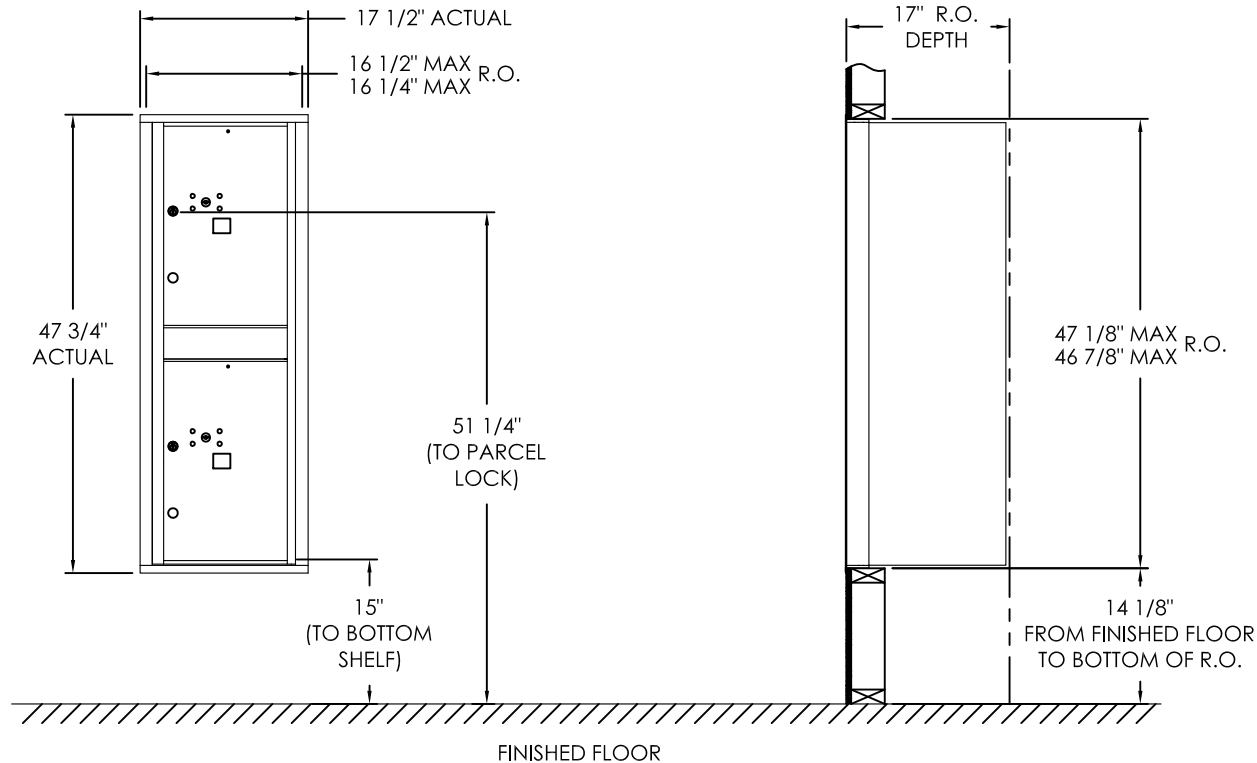
Notes:

1. Designed to mount Florence Versatile™ 4C mailbox single column 13-High Suite modules (sold separately).
2. For use with front loading modules only.

PRODUCT SERIES: VERSATILE™ 4C SURFACE MOUNT COLLAR

| | | | |
|----------------|---------|---------------|-----------|
| MODEL | SM13S | REV | B |
| SCALE | NONE | LAST REV DATE | 7/02/2014 |
| DRAWING NUMBER | SM13SCS | DRAWN BY | TNS |

versatile™ 4C Mailbox, 4C13S-2P



COMPARTMENT CHART

| DESCRIPTION | COMPARTMENT | COMPARTMENT SIZE | QTY. |
|-------------|-------------|---------------------------|------|
| PARCEL | PL6 | 20-1/2" H x 12" W x 15" D | 2 |

Notes:

- This module meets the USPS STD-4C requirements for installation defined below when the mailbox is installed per the dimensions provided on this drawing.
 - At least one customer compartment shall be positioned less than 48" above finished floor (AFF).
 - No parcel locker (interior bottom shelf) shall be positioned less than 15" AFF.
 - No patron (tenant) lock shall be positioned more than 67" AFF.
 - No customer compartment (interior bottom shelf) shall be positioned less than 28" AFF.
 - The USPS Arrow lock shall be positioned 36"- 48" AFF.
- This 4C mailbox can also be used for private applications.
- The rough opening width for multi-unit 4C installations is provided using the Florence configurator: www.florencemailboxes.com/configurator.

PRODUCT SERIES: VERSATILE™ 4C FRONT LOAD MAILBOX

| | | | |
|----------------|------------|---------------|----------|
| MODEL | 4C13S-2P | REV | B |
| SCALE | NONE | LAST REV DATE | 07/09/19 |
| DRAWING NUMBER | 4C13S-2PCS | DRAWN BY | RAK |