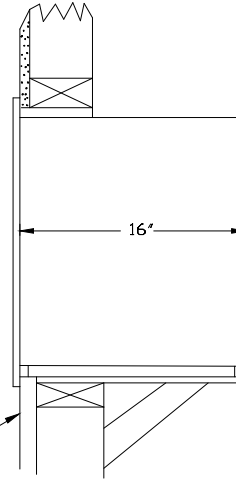
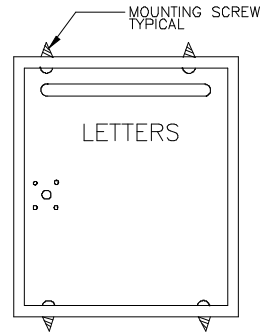


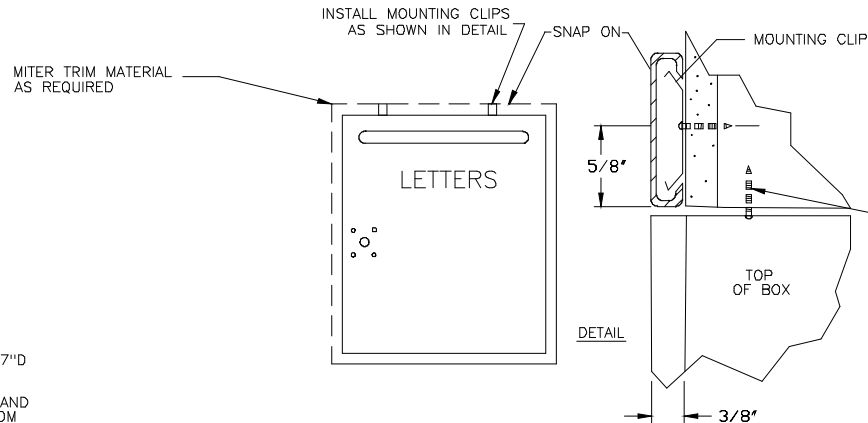
## 140F HORIZONTAL TYPE F/L COLLECTION BOX

NOTES:

1. MAIL COLLECTION FROM FRONT LOCKED DOOR.
2. BOX SIZE: 17 1/8"H x 14 3/8"W x 16 1/2"D
3. WALL ROUGH OPENING: 17 3/8"H x 14 5/8"W x 17"D
4. SIZE, WITH TRIM: 19 5/8"H x 16 7/8"W
5. MATERIALS: EXTRUDED ALUMINUM FRAME AND TRIM, 5/32" THICK EXTRUDED ALUMINUM DOOR, AND STEEL COMPARTMENT.
6. FINISHES: CLEAR ANODIZED ALUMINUM, GOLD ANODIZED ALUMINUM, OR BRONZE POWDER COAT AS DESIRED.
7. ENGRAVING:  
STANDARD: ENGRAVED 'LETTERS', 1" HIGH.  
OPTIONAL: AS DESIRED.
8. LETTER SLOT: 3/4"H x 10"W
9. LOCK: PREPARED FOR POSTAL LOCK
10. LOCAL POSTAL APPROVAL REQUIRED FOR USE OF 140R COLLECTION BOX.



REFER TO ARCHITECTS  
CONSTRUCTION DRAWING  
FOR WALL DETAILS



MOUNTING INSTRUCTIONS:

1. MAKE WALL CUTOOUT OF  
17 3/8"H x 14 5/8"W X 17"D  
WITH ADEQUATE FRAMING TO  
MOUNT COLLECTION BOX.
2. INSERT BOX INTO WALLCUT AND  
SECURE ON TOP AND BOTTOM  
WITH #8 x 1 1/4" LONG SCREWS.

TRIM INSTALLATION:

1. SCREW MOUNTING CLIPS TO WALL USING #8 x 1 1/4"
2. HOOK FIRST EDGE OF TRIM OVER FIRST LEG OF CLIP, THEN SNAP SECOND EDGE OF TRIM OVER OTHER LEG OF CLIP.

— MOUNTING SCREW TYPICAL

**AUTH AF FLORENCE**  
MANUFACTURING COMPANY  
6936 CORPORATE DRIVE  
MANHATTAN KANSAS 66503