

**Installation Manual  
CK25750**

**Postal to private conversion kit  
Postal access point and parcel locker  
excluding high security CBU Rev 4**



**TABLE OF CONTENTS**

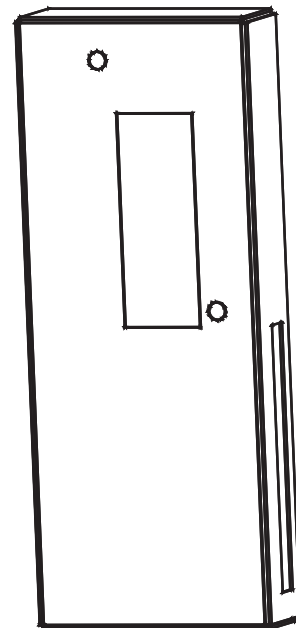
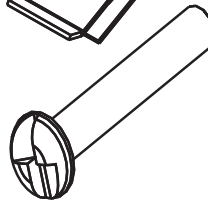
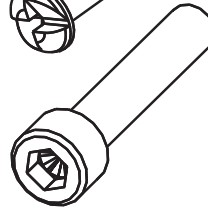
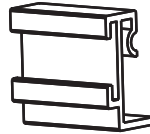
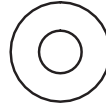
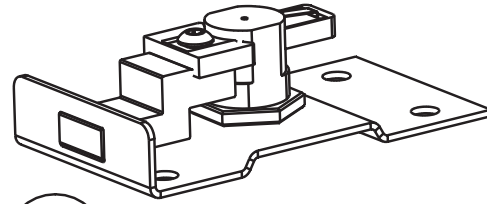
<i>DESCRIPTION</i>	<i>PAGE</i>
Parts List	3
630 Series, 1250 4B+ and Non 4B+ Series Vertical	4
12/120/130 Collection Boxes, Non-4B+ AF and AD Horizontals, Horizontal Hinged Rear Covers, NDCBU and Collection Bundle Centers	6
4B+ AF and AD Horizontals, CBU Series E and F, OPL F (1590T1) and AF4C Access Door	8
1400 Series Parcel Locker	10
2600 Series and OPL Version 1 (1590) Parcel Locker	12
CBU F Series and AF4C Parcel Locker	14
OPL Version 2 (1590V2) And IPL Parcel Locker	16
KK And K26 Series Key Keeper	18

*This page intentionally left blank*

# Kit Content List

## CK25750

Qty	Description
1	Private Lock Assembly
4	3/16" Flat Washer
4	#10-32 X .25" Flat Head Screw
1	#10-32 X 1.125" Phillips Head Screw
1	Plastic Spacer
5	#10-32 X .375" One-Way Screw
2	#10-32 X 1" Allen Head Screw
2	#10-32 Tinnerman Clip
2	#10-32 X 1.25" One-Way Screw
4	#10-32 Lock Nut
10	Spacer
1	1400 Series Private Parcel Lock Cover



**Note: not all parts will be used for all installations.**

# Installation Of Postal To Private Kit

## 630 series, 1250 4B+ and non 4B+ series Vertical Mailboxes

Before proceeding, you will need to determine if the unit has tinnerman clips to retain the lock. If it does not have them you will need to have the key to the tenant door with master lock hole.

1. Open vertical unit by tilting Forward. Remove insert from frame.

**Note:** for verticals with tinnerman clips installed proceed to step 5.

2. Remove two (2) screws on top of insert, retain for reuse. Unlock and open door with master lock hole.

3. Slide two (2) 32401 #10-32 tinnerman clips on to security bracket from the bottom with the angle on clip edge to the outside.

4. Reinstall security bracket with the two (2) original screws.

5. Turn the lock to unlock position. Install lock bottom first then bring top up into position.

6. Install two (2) 84994 #10-32 x .375" one-way screws from the rear of insert.

7. Reinsert unit into frame ensuring that the "press to close bar" is not damaged.

8. Lock and unlock to confirm operation.

Dispose of remaining hardware.

### REQUIRED TOOLS

Flat head screwdriver

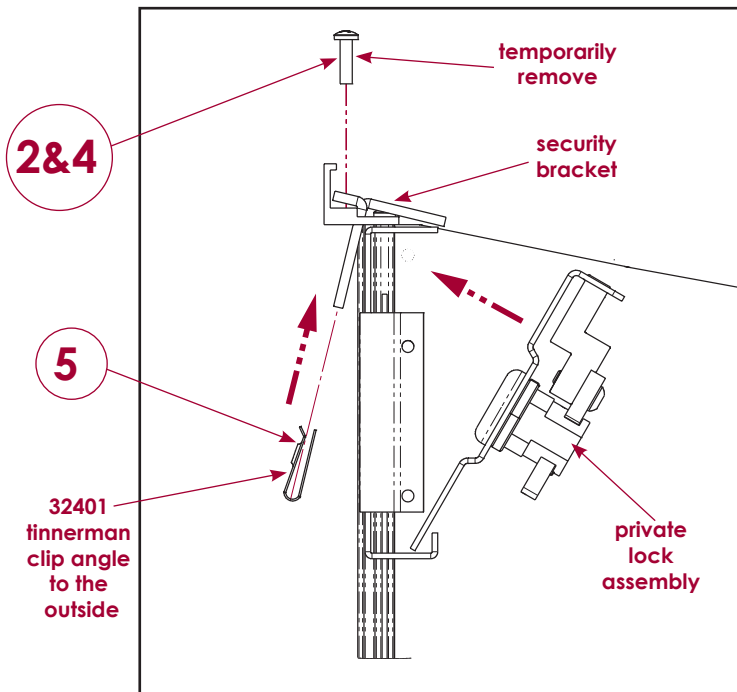
PART #	DESCRIPTION
--------	-------------

-	Private lock assembly
84994	#10-32 X .375" One-way screw
32401	#10-32 Tinnerman clip

## Installation Of Postal To Private Kit

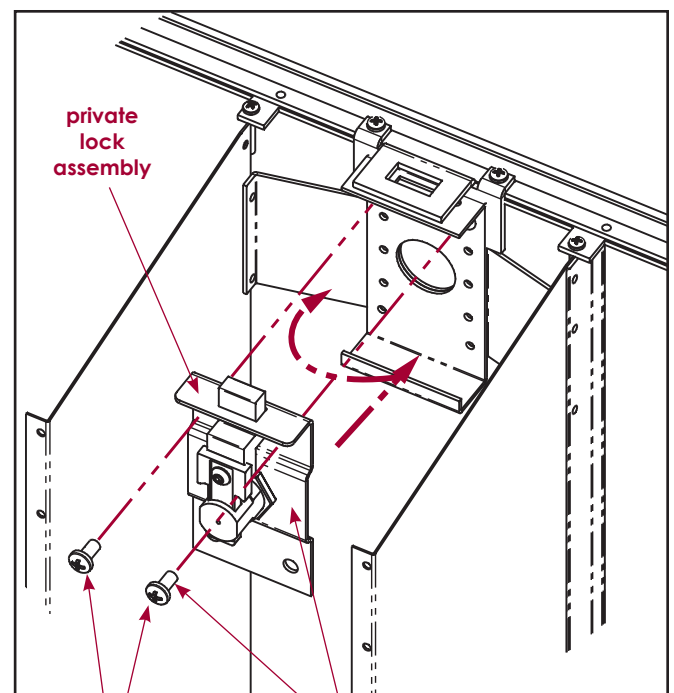
## 630 series, 1250 4B+ and non 4B+ series Vertical Mailboxes

## 4B+ Vertical w/o Clips



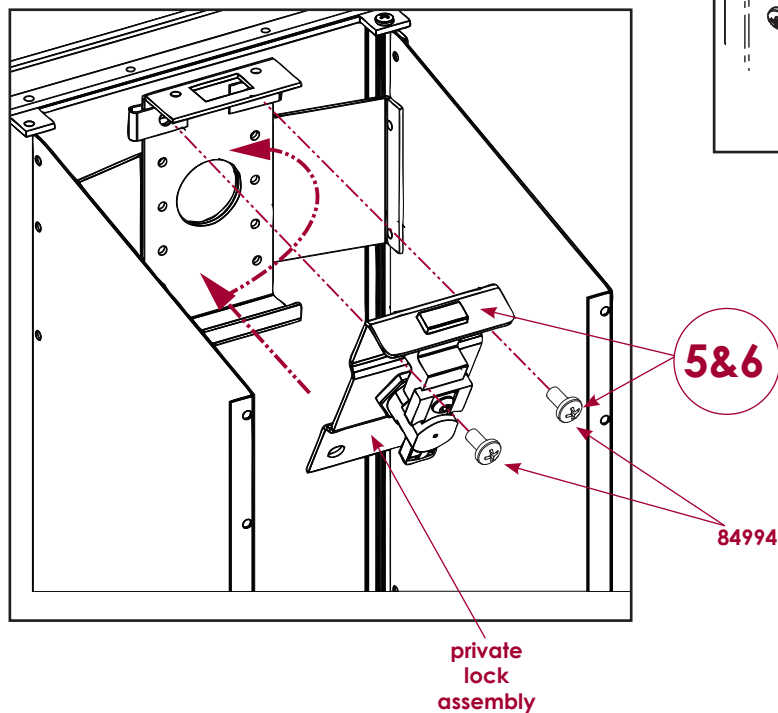
**Fig. 1**

## 4B+ Vertical w/o Clips



**Fig. 2**

## Non 4B+, 630 Series And 4B+ With Clips Vertical



# Installation Of Postal To Private Kit

## 12/120/130 Collection Boxes, Non-4B+ AF and AD Horizontals, Horizontal Hinged Rear Covers, NDCBU and Collection Bundle Centers

1. Open unit to gain access to back of postal door.
4. Close door or gate. Lock and unlock to confirm operation.

2. Position lock over 4 mounting screw holes.

Dispose of remaining hardware.

3. Install and tighten four (4) 30197 #10-32 x .25" Flat head screws.

Note: for collection bundle centers use four (4) 3/16" flat washers between lock and door.

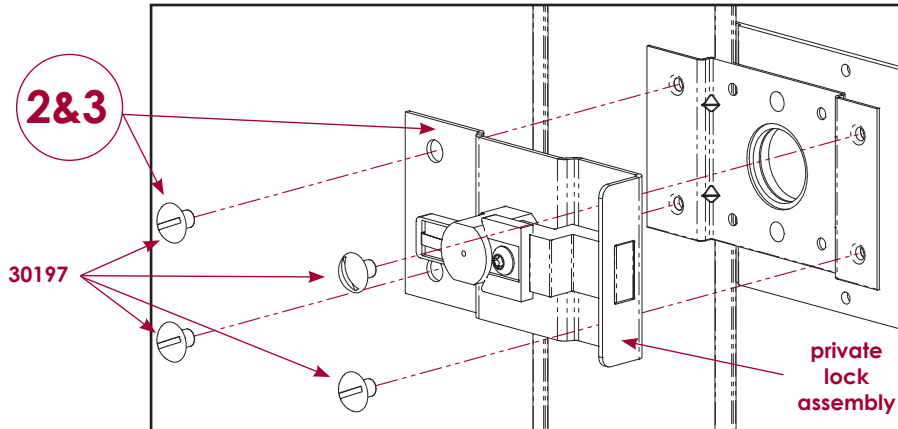
Note: for 2600 series non 4B+ use four (4) 3/16" flat washers between lock and screws.

REQUIRED TOOLS		PART #	DESCRIPTION
Flat head screwdriver		-	Private lock assembly
		30197	#10-32 x .25" Flat head screw
		30194	3/16" Flat washer

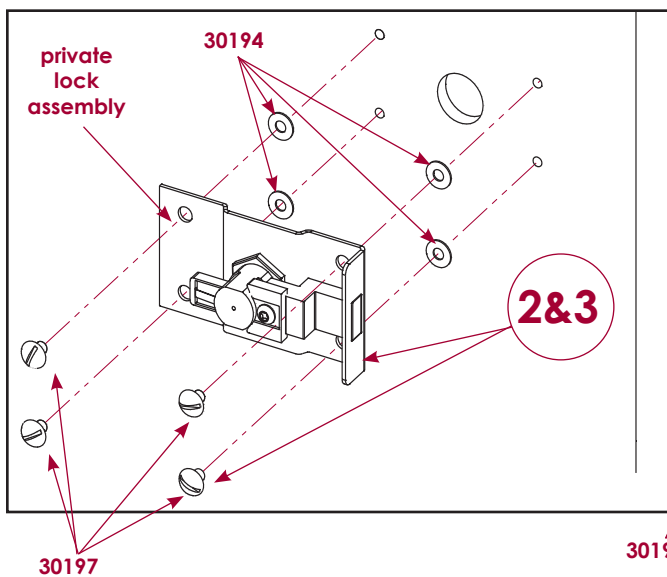
# Installation Of Postal To Private Kit

## 12/120/130 Collection Boxes, Non-4B+ AF and AD Horizontals, Horizontal Hinged Rear Covers, NDCBU and Collection Bundle Centers

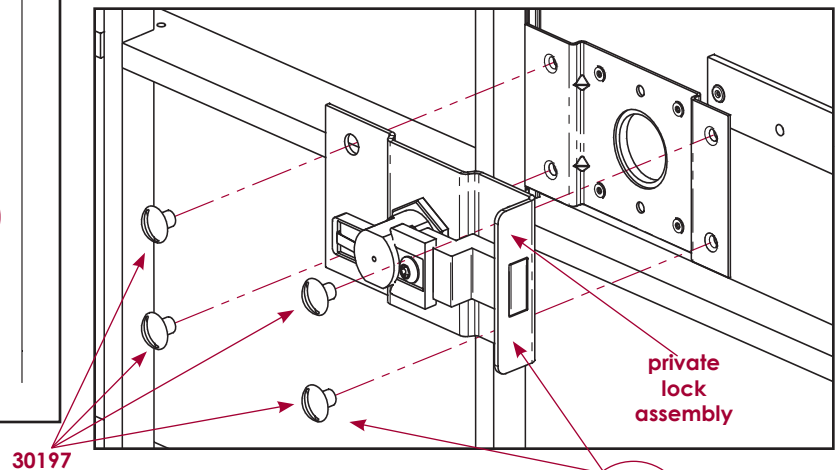
### 12/120/130 Collection Boxes and NDCBU



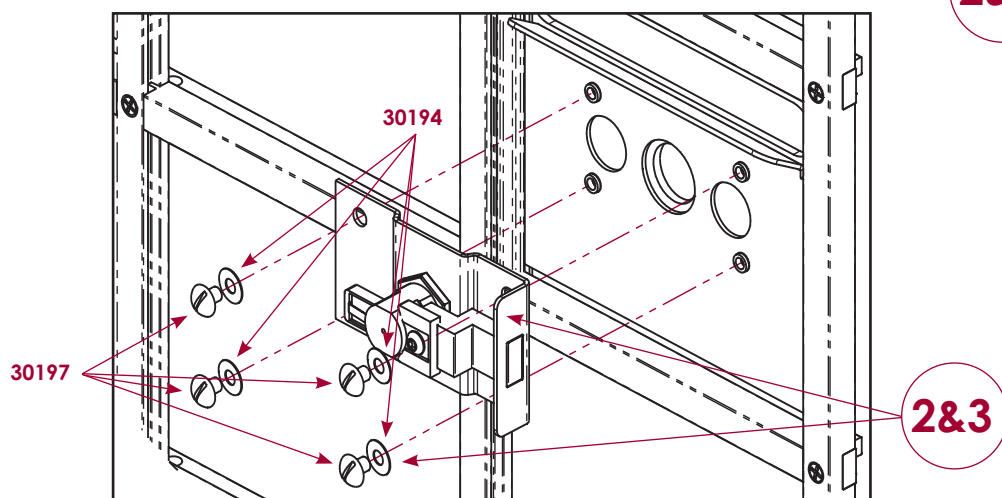
### Collection Bundle Centers



### 1400 Series Non 4B+ Units



### 2600 Series Non 4B+ Units



# Installation Of Postal To Private Kit

## 4B+ AF and AD Horizontals, CBU Series E and F, OPL F (1590T1) and AF4C Access Door

- 1.** Open unit to gain access to back of postal door.
  - 2.** Position lock over 4 mounting carriage bolts (on 1400 and 2600 series units be sure to hold the carriage bolts in place from the front of gate.)
  - 3.** For CBU E and F, OPL F (1590T1) and AF4C add ten (10) 91124 spacer, two per inner stud and three per outer stud.
  - 4.** Install and tighten four (4) 86091 #10-32 lock nuts.
  - 5.** Close postal access door or gate. Lock and unlock to confirm operation.
- Dispose of remaining hardware.

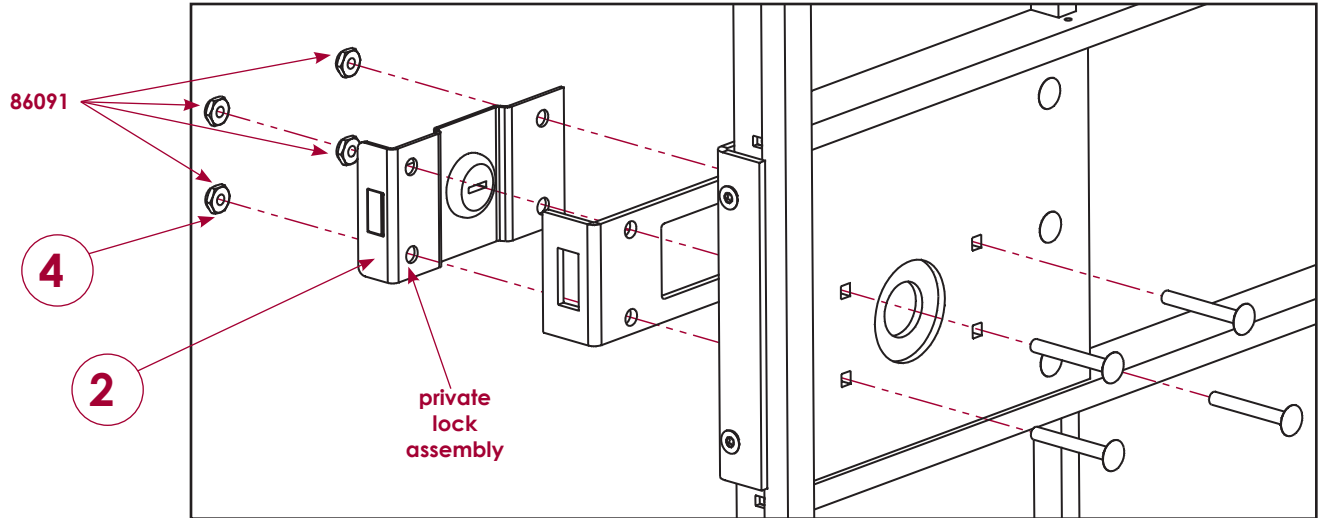
REQUIRED TOOLS		PART #	DESCRIPTION
3/8" Nut driver		-	Private lock assembly
		86091	#10-32 Lock nut
		91124	Spacer



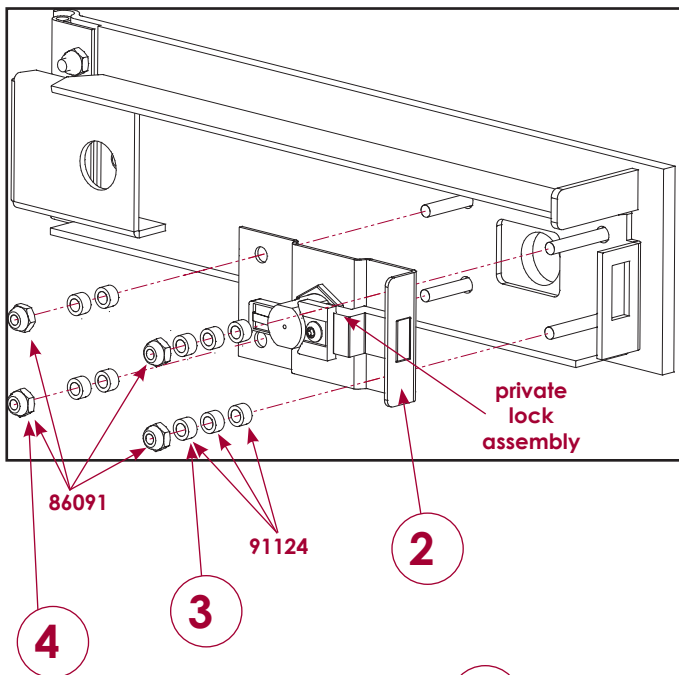
# Installation Of Postal To Private Kit

## 4B+ AF and AD Horizontals, CBU Series E and F, OPL F and AF4C Access Door

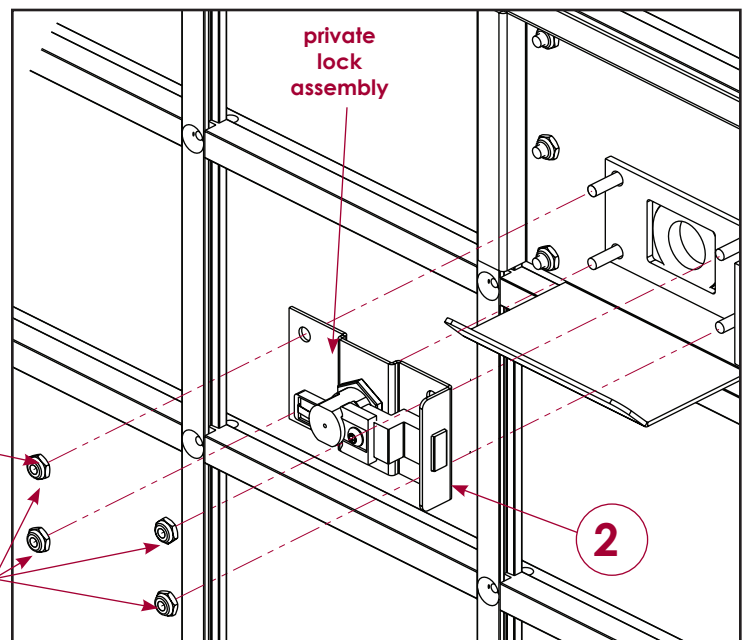
### 1400 Series 4B+



### CBU E, CBU F, OPL F (1590T1) and AF4C\*



### 2600 Series 4B+



\*Bracket may be different than image shown, the designs are functionally interchangeable.

# Installation Of Postal To Private Kit

## 1400 Series Parcel Locker

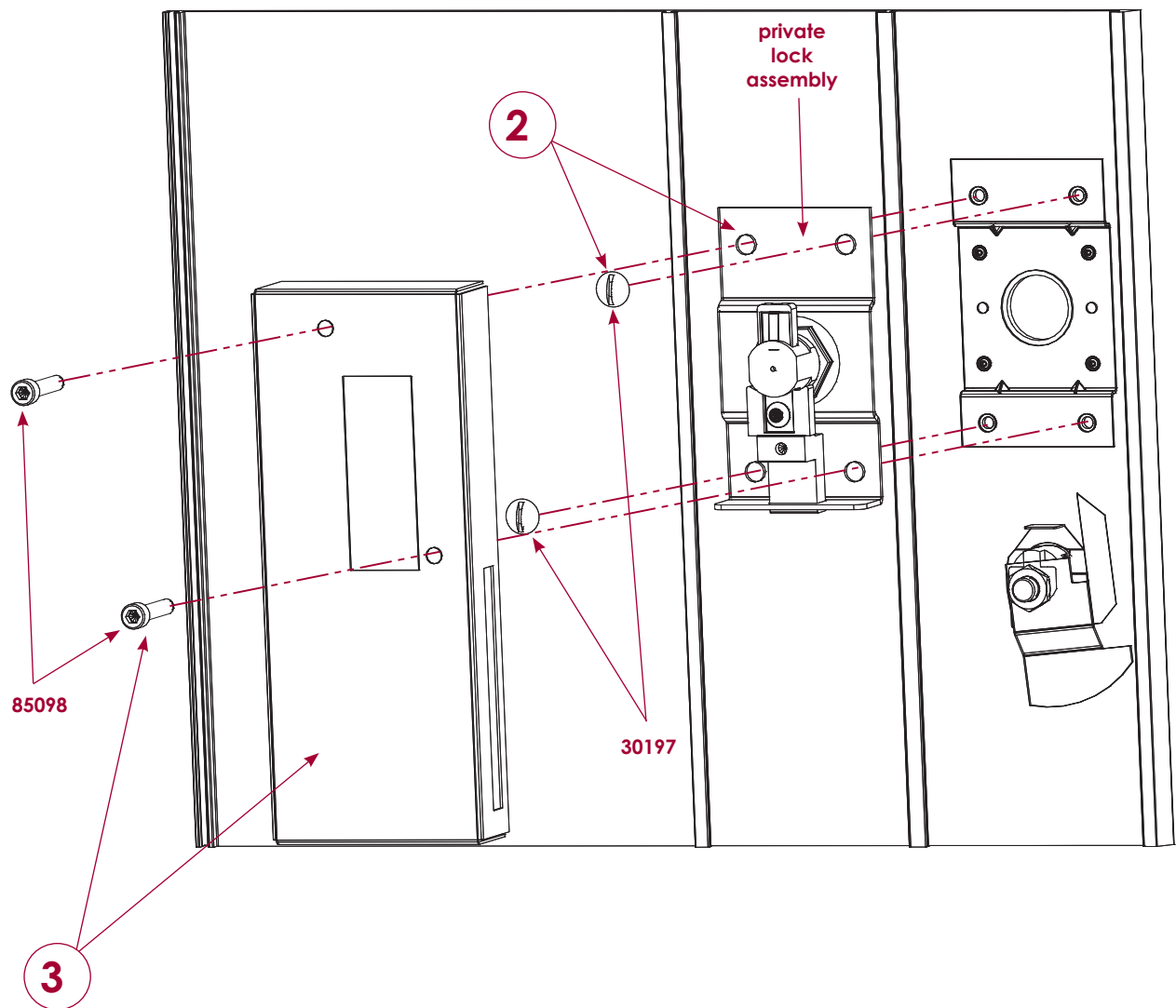
1. Open parcel door.
  2. Install lock assembly as shown and secure with two (2) 30197 #10-32 X .25" flat head screws in the top right and bottom left positions.
  3. Install one (1) 25734 1400 series private parcel lock cover with two (2) 85098 #10-32 x 1" Allen head screws.
  4. Lock and unlock to confirm operation.
- Dispose of remaining hardware

REQUIRED TOOLS
Flat head screwdriver
5/32" Allen head driver

PART #	DESCRIPTION
-	Private lock assembly
30197	#10-32 x .25" Flat head screw
85098	#10-32 X 1" Allen head screw
25734	Private parcel lock cover

# Installation Of Postal To Private Kit

## 1400 Series Parcel Locker



# Installation Of Postal To Private Kit

## 2600 Series and OPL Version 1 (1590) Parcel Locker

**Note:** If the parcel lock cover is held on by one screw you have a OPL version 1 (1590). If not, go to instructions on page 16, to determine if you have OPL version 2 (1590v2) or instructions on page 14, to determine if you have OPL F (1590T1).

**4.** Install existing parcel lock cover, secure with one (1) 1100-123 #10-32 X 1.125" Phillips head screw.

**1.** Open parcel door.

**5.** Lock and unlock to confirm operation.

**2.** Slide one (1) 25735 plastic spacer over the locking bracket. Ensure spacer is centered along bracket.

Dispose of remaining hardware

**3.** Install lock assembly as shown and secure with four (4) 3/16" washers and four (4) 30197 #10-32 X .25" flat head screws.

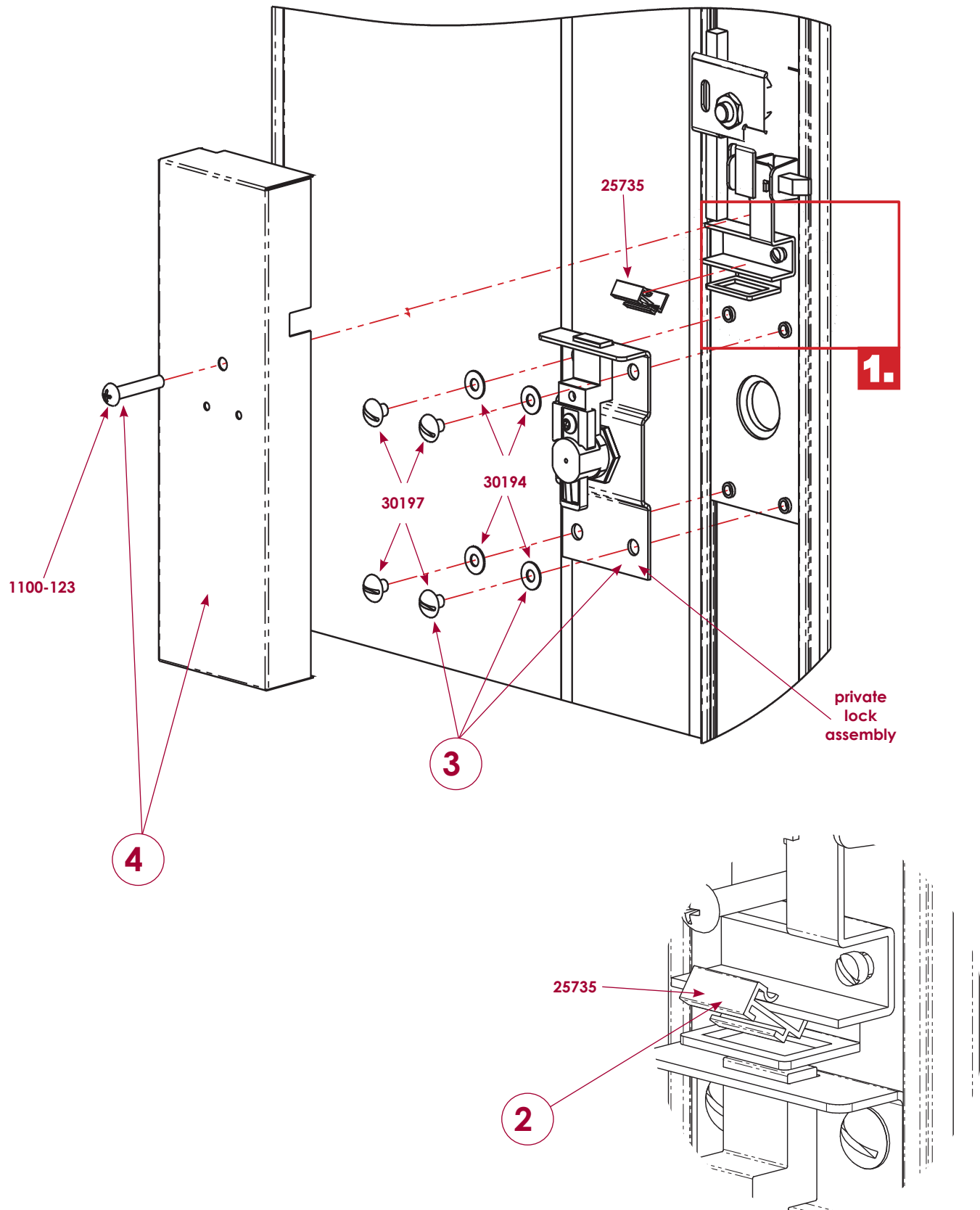
### REQUIRED TOOLS

Flat head screwdriver  
#2 Phillips screwdriver

PART #	DESCRIPTION
-	Private lock assembly
30197	#10-32 x .25" Flat head screw
30194	3/16" Flat washer
25735	Plastic spacer
1100-123	#10-32 X 1.125" Phillips screw

# Installation Of Postal To Private Kit

## 2600 Series and OPL Version 1 Parcel Locker



# Installation Of Postal To Private Kit

## CBU F, OPL F and AF4C Parcel Locker

**Note:** If the parcel lock cover is held on by two screw (one on top and one on bottom) you have a OPL F (1590T1). If not, go to instructions on page 12, to determine if you have OPL version 1 (1590) or instructions on page 16, to determine if you have OPL version 2 (1590v2).

**1.** Open parcel door.

**2.** Install lock assembly as shown with eight (8) 91124 spacers, two per stud.

**3.** Secure with four (4) 86091 #10-32 lock nuts.

**4.** Install existing parcel lock covers, secure with five (5) 84994 #10-32 X .375" one-way head screws.

**Note:** For AF4C and OPL F only one cover and two (2) 84994 #10-32 x.375" One-way head screws required.

**5.** Lock and unlock to confirm operation.

Dispose of remaining hardware

### REQUIRED TOOLS

3/8" Nut driver

Flat head screwdriver

PART #	DESCRIPTION
--------	-------------

-	Private lock assembly
---	-----------------------

86091	10-32 Lock nut
-------	----------------

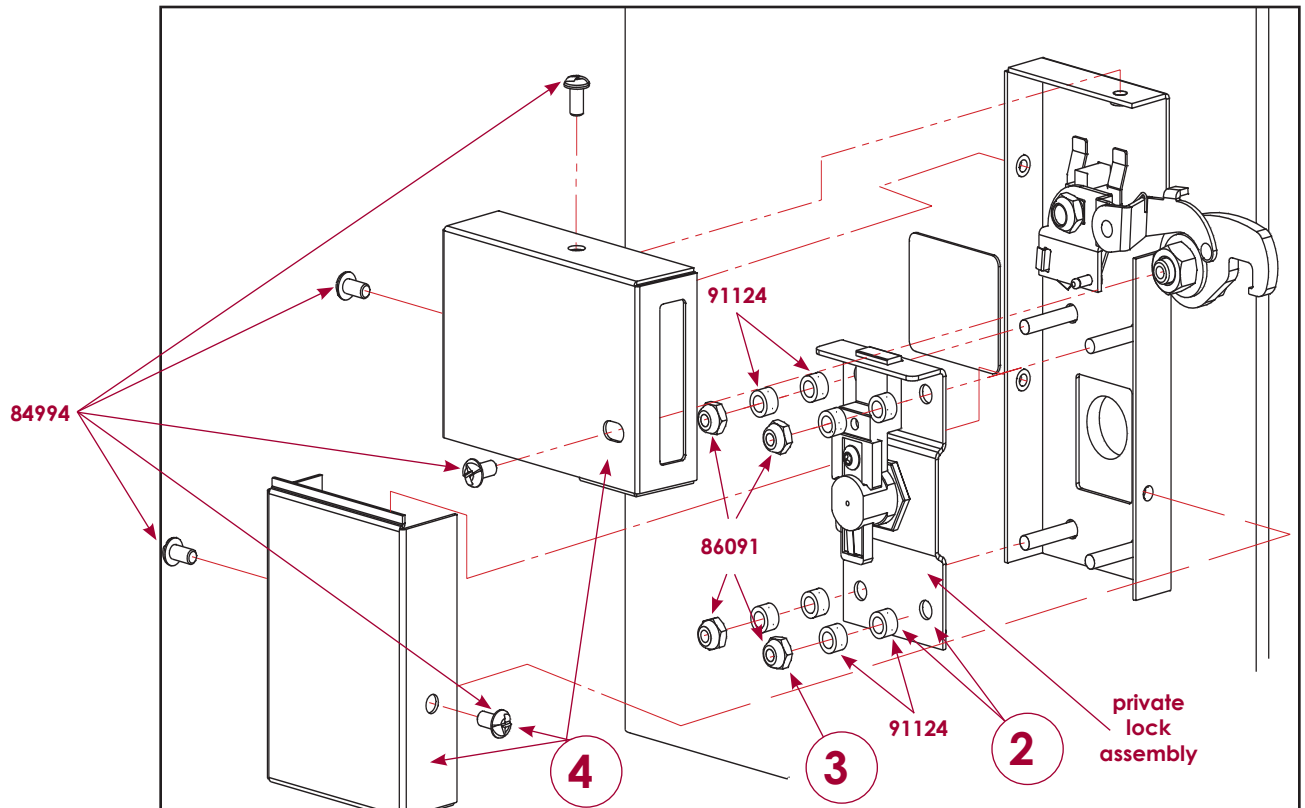
91124	Spacer
-------	--------

84994	#10-32 X .375" One-way screw
-------	------------------------------

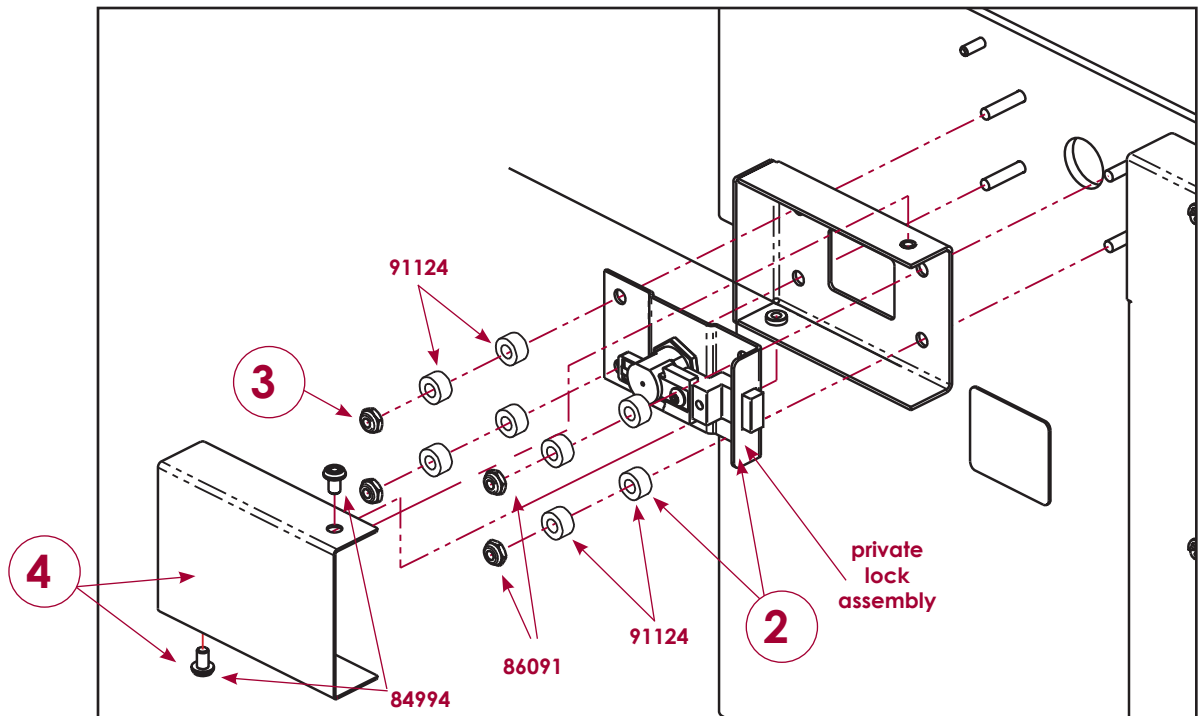
# Installation Of Postal To Private Kit

## CBU F, OPL F and AF4C Parcel Locker

### CBU F Parcel



### AF4C and OPL F Parcel



# Installation Of Postal To Private Kit

## OPL Version 2 and IPL Parcel Locker

**Note:** If the parcel lock cover is held on by two screw you have a OPL version 2 (1590V2). If not, go to instructions on page 12, to determine if you have OPL version 1 (1590) or instructions on page 14, to determine if you have OPL F (1590T1).

**1.** Open parcel door.

**3.** Install existing parcel lock cover, secure with two (2) 950410 #10-32 X 1.25" one-way head screws.

**4.** Lock and unlock to confirm operation.

**2.** Install lock assembly as shown and secure with two (2) 30197 #10-32 X .25" flat head screws in the upper left and lower right positions.

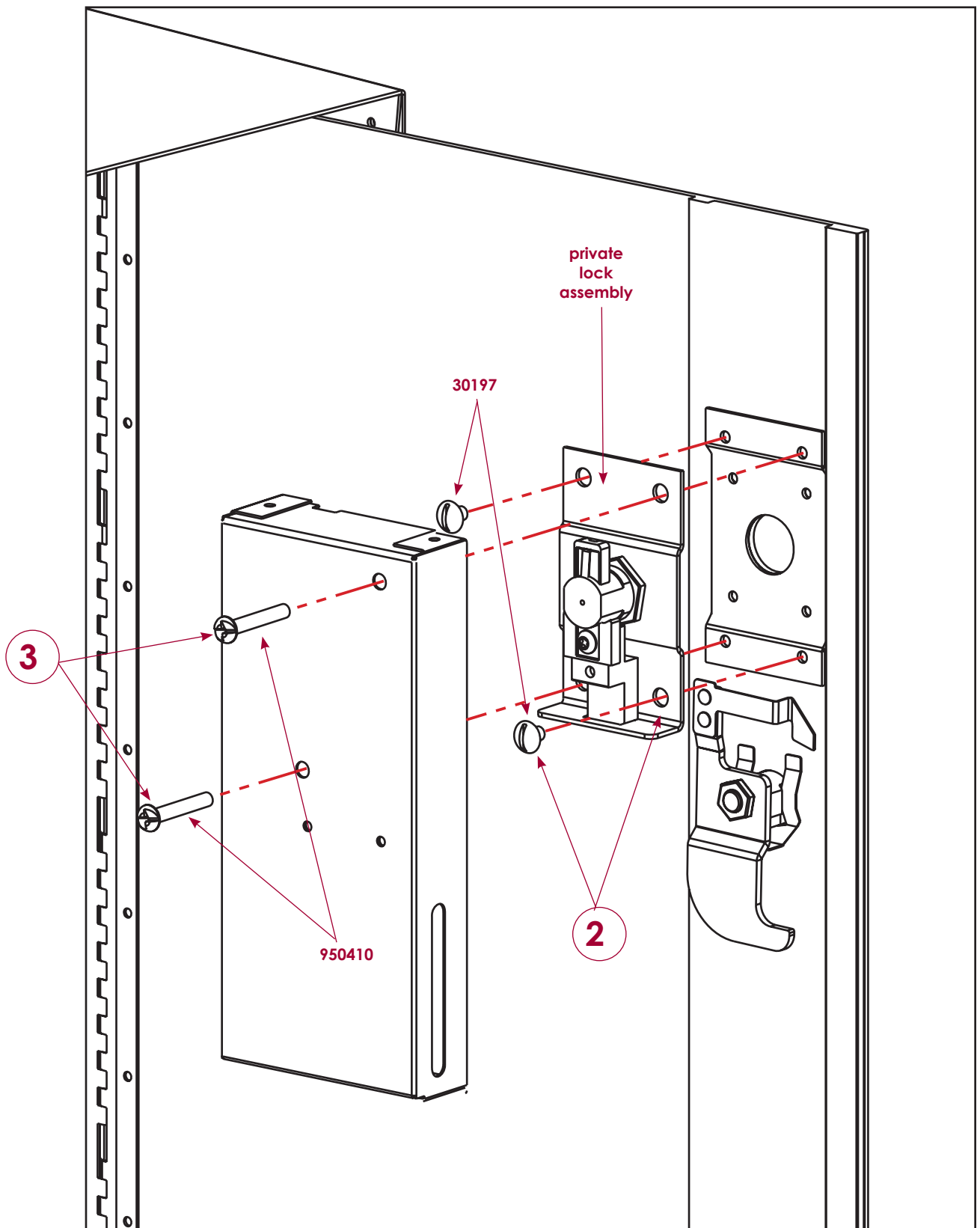
Dispose of remaining hardware

REQUIRED TOOLS		PART #	DESCRIPTION
3/8" Nut driver		-	Private lock assembly
Flat head screwdriver		30197	#10-32 X .25" Flat head screw
		950410	#10-32 X 1.25" One-way screw



# Installation Of Postal To Private Kit

## OPL Version 2 and IPL Parcel Locker



# Installation Of Postal To Private Kit

## KK and K26 Series Key Keeper

**For KK series key keepers:**

**For K26 series key keeper:**

- 1.** Install lock assembly as shown and secure with four (4) 30197 #10-32 X .25" flat head screws.
  - 2.** Lock and unlock to confirm operation.
- 1a.** Install lock assembly as shown and secure with four (4) 86091 #10-32 lock nuts.
  - 2a.** Lock and unlock to confirm operation.

Dispose of remaining hardware

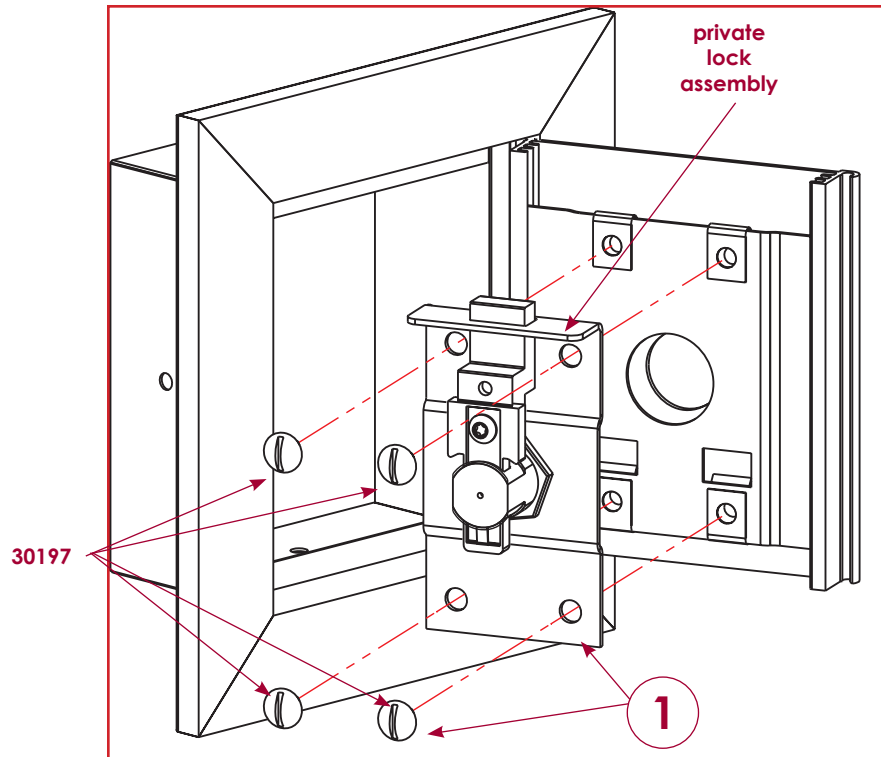
Dispose of remaining hardware

REQUIRED TOOLS		PART #	DESCRIPTION
3/8" Nut driver		-	Private lock assembly
Flat head screwdriver		86091	#10-32 Lock nut
		30197	#10-32 X .25" Flat head screw

# Installation Of Postal To Private Kit

## KK and K26 Series Key Keeper

### KK Series Keykeeper



### K26 Series Key Keeper

