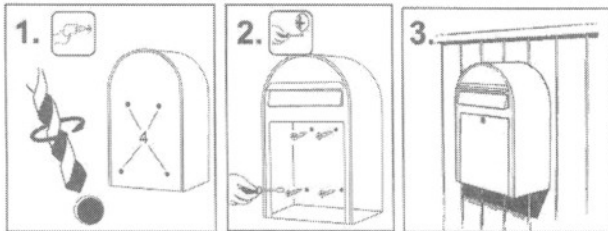


INSTALLATION

MOUNTING INSTRUCTIONS

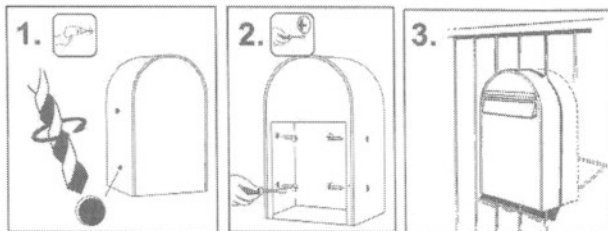


Mounting a BOBI mailbox to a wall or fence



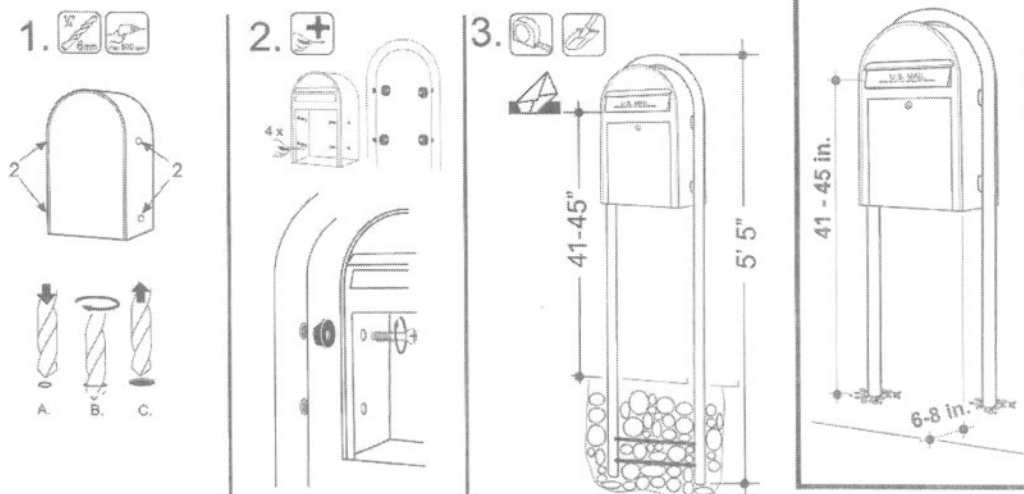
Drill out the 4 preformed holes which are in the back of the mailbox using a 1/4" or 6mm drillbit.
Attention! Holes should be drilled with a low speed drill (maximum 500 rpm) and on stainless steel mailboxes it is recommended to use a drillbit for drilling into metal.
Fix the mailbox from inside using the 4 screws provided.

Mounting a BOBI B mailbox through a fence



Drill out the 4 preformed holes which are on the side of the mailbox using a 1/4" or 6mm drillbit.
Attention! Holes should be drilled with a low speed drill (maximum 500 rpm) and on stainless steel mailboxes it is recommended to use a drillbit for drilling into metal.
Fix the mailbox to the wall from inside using the 4 screws provided.

Mounting a mailbox on a BOBI ROUND stand



Before installing the mailbox to the curbside see the USPS instructions to ensure its correct placement and height at the street. See page 5.

1. Drill out the 4 preformed holes which are on the side of the mailbox using a 1/4" or 6mm drillbit.
Attention! Holes should be drilled with a low speed drill (maximum 500 rpm) and on stainless steel mailboxes it is recommended to use a drillbit made from hardened steel.
2. Fasten the mailbox to the stand using the fittings provided.
3. Dig a hole ca. 17" x 17" x 17". Place the mailbox and stand in the ground, check the level and fill the hole with coarse gravel or concrete. We recommend using a quick set concrete for a secure and solid installation.