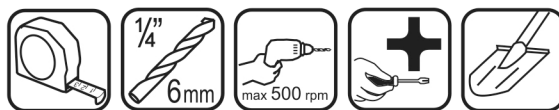
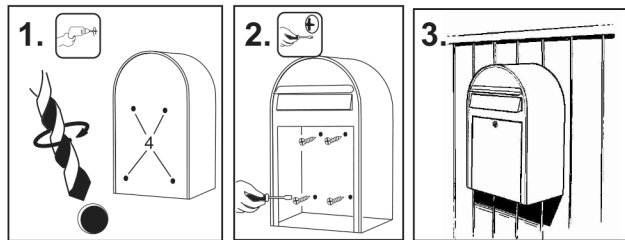


MOUNTING INSTRUCTIONS FOR BOBI & BOBIROUND



Mounting a BOBI mailbox to a wall or fence

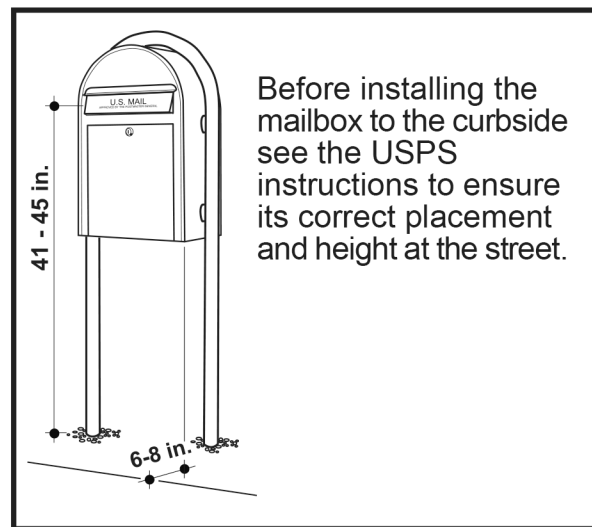
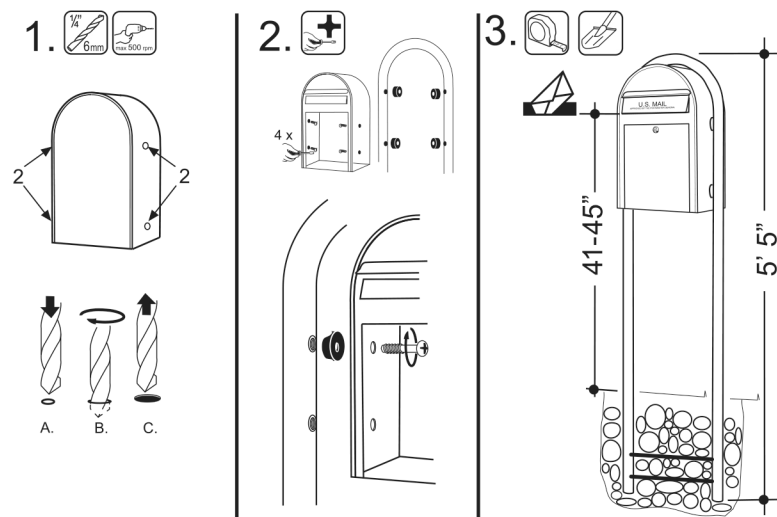


Drill out the 4 preformed holes which are in the back of the mailbox using a $\frac{1}{4}$ " or 6 mm drillbit.

Attention! Holes should be drilled with a low speed drill (maximum 500 rpm) and on stainless steel mailboxes it is recommended to use a drillbit made from hardened steel.

Fix the mailbox from inside using the 4 screws provided.

Mounting a BOBI mailbox on a BOBIROUND stand



1. Drill out the 4 preformed holes which are on the side of the mailbox using a $\frac{1}{4}$ " or 6mm drillbit.
Attention! Holes should be drilled with a low speed drill (maximum 500 rpm) and on stainless steel mailboxes it is recommended to use a drillbit made from hardened steel.
2. Fasten the mailbox to the stand using the fittings provided.
3. Dig a hole ca. 17" x 17" x 17". Place the mailbox and stand in the ground, check the level and fill the hole with coarse gravel or concrete. We recommend using a quick set concrete for a secure and solid installation.