

Dea's Garden Thru-Wall Type(with combination lock)

Thank you so much for your purchase of Dea's Garden Product.

Please be sure to read this manual in order to use this product safely and properly.

〈Reminder before installtion〉

- ◆Please make sure that the place of installation does not disturb passages or create obstruction.
- ◆Please make enough space to take out mail from rear door.
- ◆Loose installation may cause unit to fall from the wall during use.
Please make sure it is fixed firmly according to this installation manual.
- ◆Please use a lintel above unit so no load bearing weight rests on unit.
- ◆Please make sure unit is level and plumb.
- ◆Please don't wash the unit by using soap with harsh chemicals like acid or hydrochloric acid.It may cause change in color.Use only mild ph-balanced detergent.
- ◆Please be careful using paints during wall construction. Cover mailbox unit during paint.It may cause change in color and peeling of paints in the mailbox unit.
- ◆Please don't apply strong force on the unit, as this may cause damage or malfunction.

Kit list

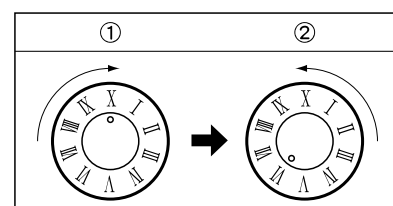
- Please check the type and quantity of all parts at the time of unpacking.
- Please check the function of proudct.

Name □	Qty.
Mailbox	1
Installtion manual	1
Maintenance manual (with combination key adjustment tool)	1

【1】How to unlock combination lock.

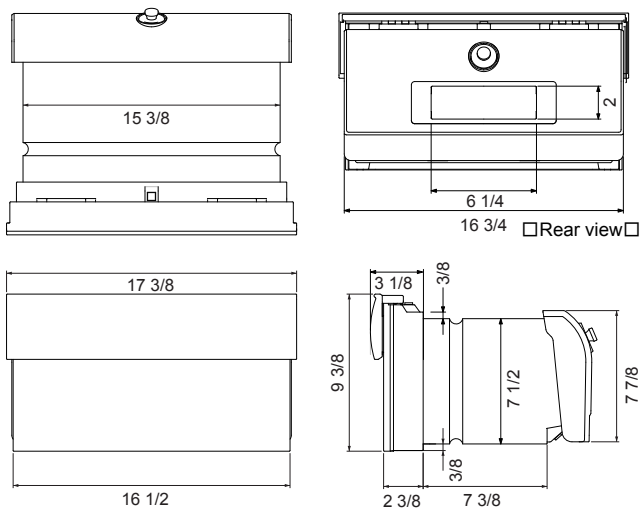
At the time of purchase, the dial is set to [X]-[VI].
Please follow the instruction below to open.

- First, please dial the knob clockwise more than two times.□□
- Step① : Dial the knob clockwise and stop at [X].
- Step② : Dial the knob counterclockwise and turn in to[VI]
to open the rear door.

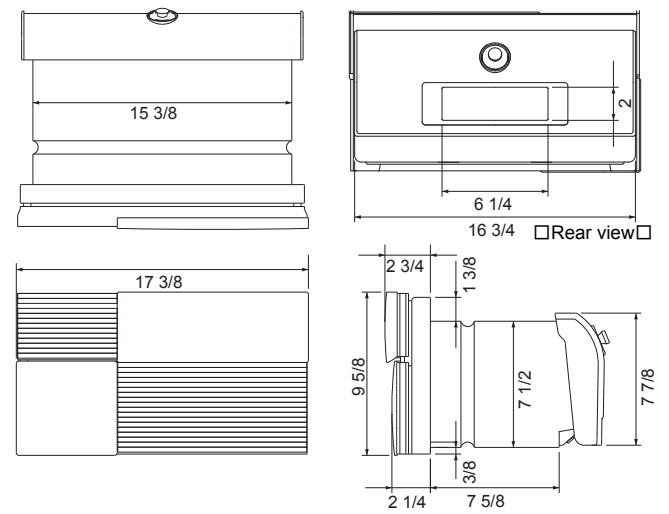


[2] Product Specification Drawing (scale unit : inches)

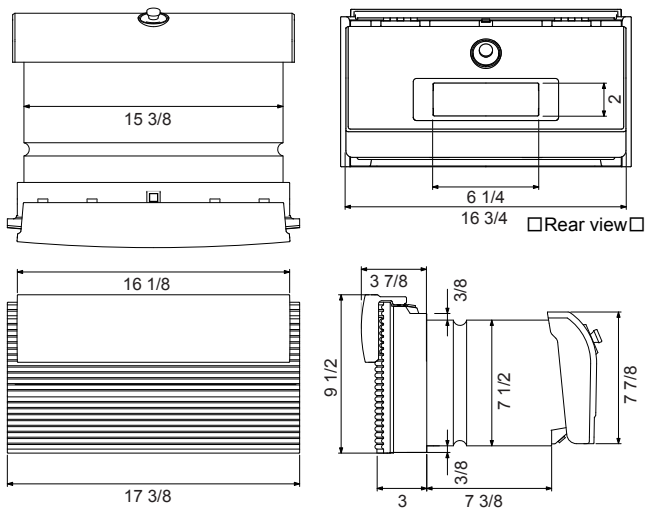
□Crea-U



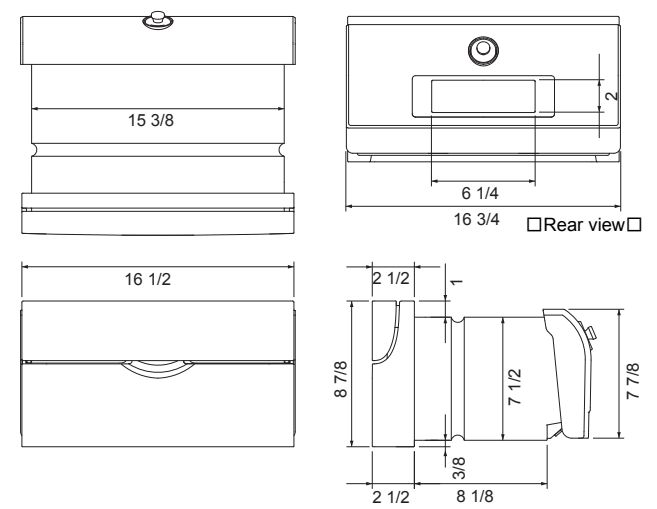
□Square-U



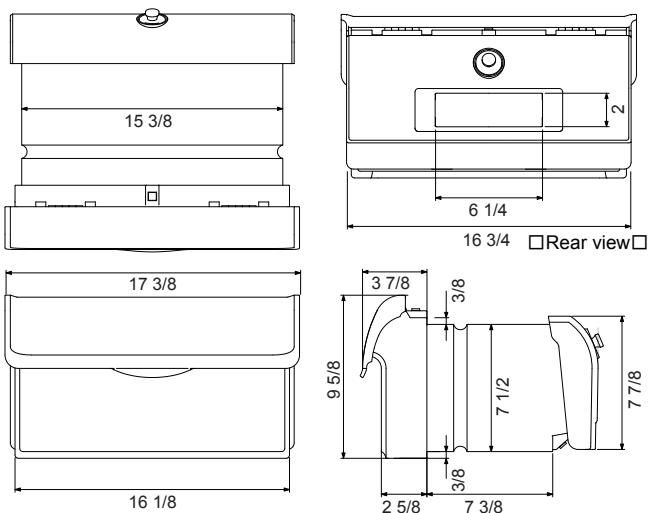
□Dune-U



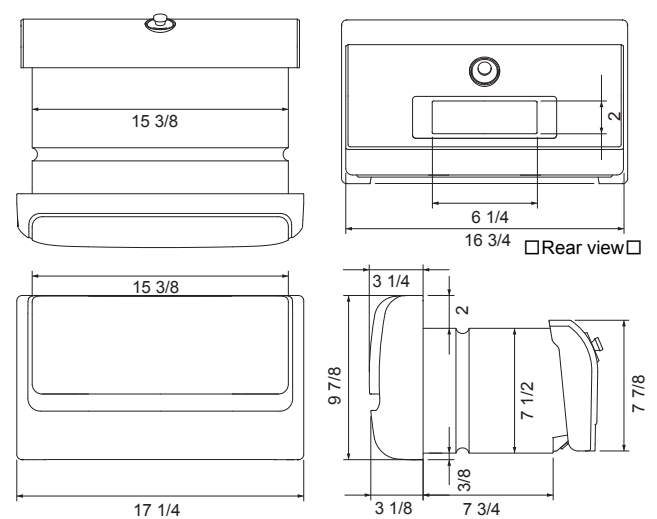
□Plano-U



□Stucco-U

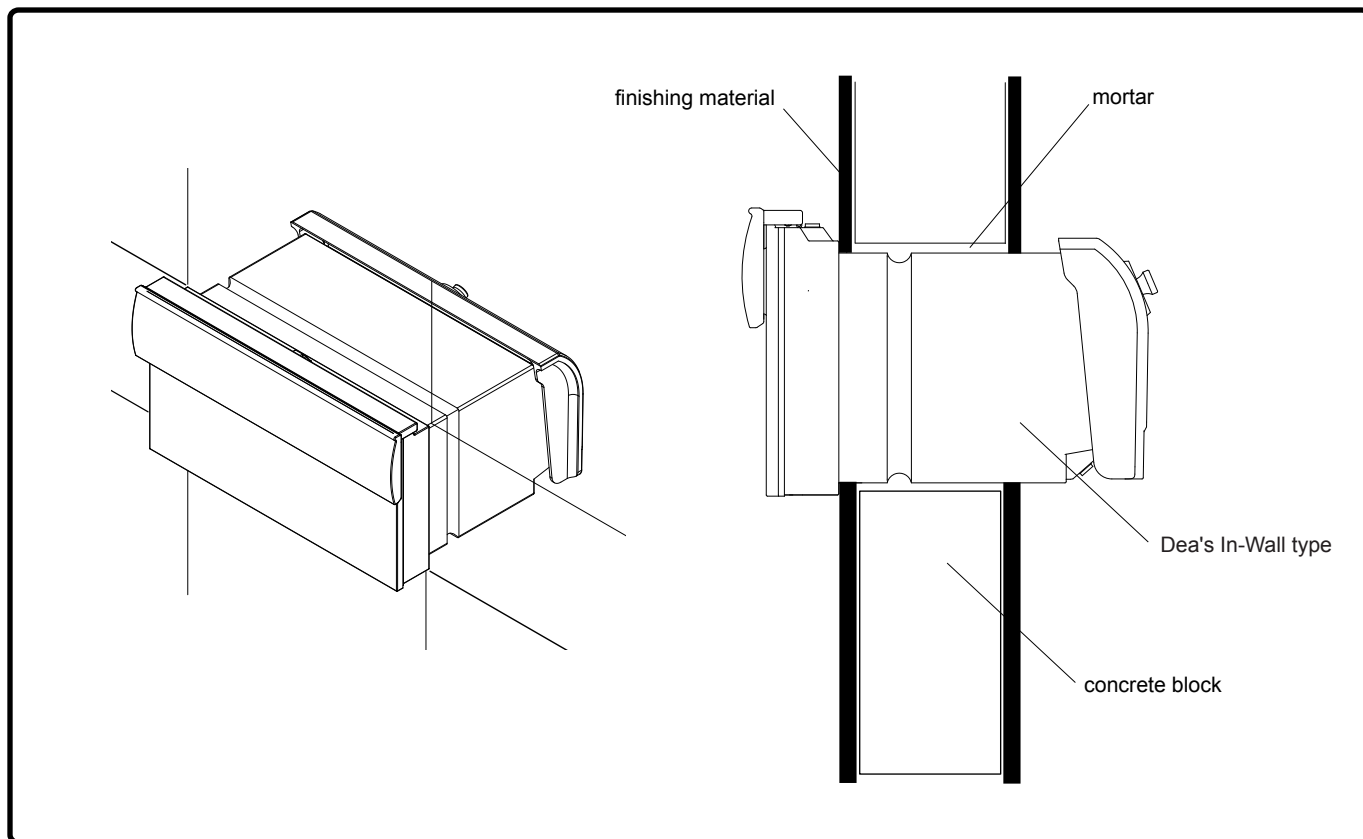


□Moco-U



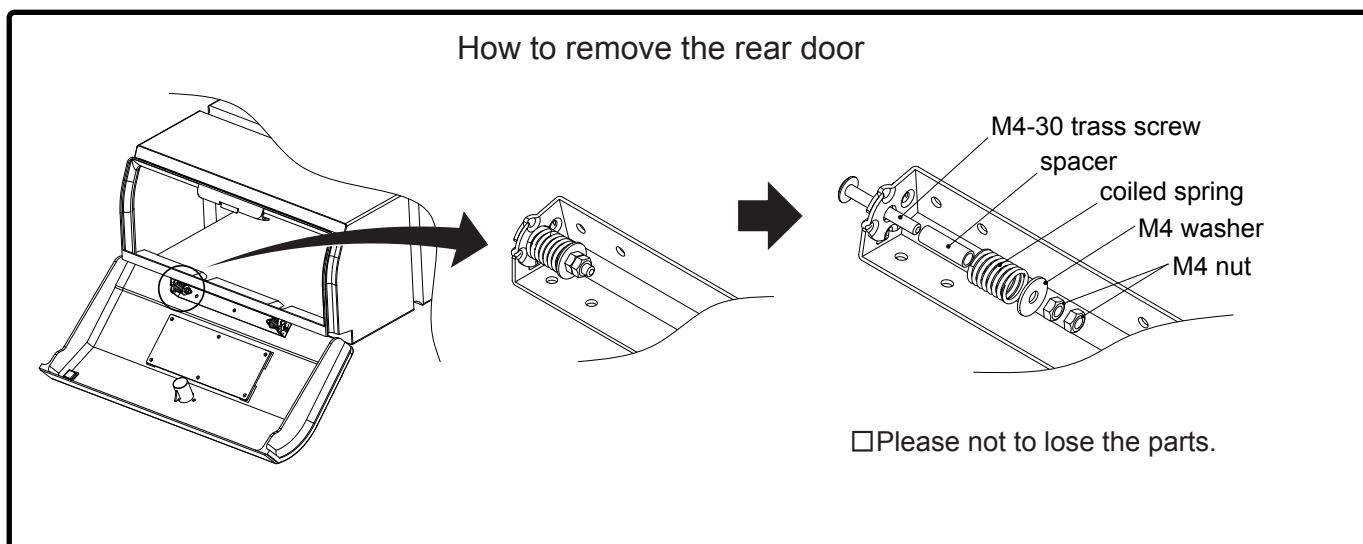
【3】Installation during wall construction

- ☐ Install the unit into the wall with concrete blocks or bricks during construction.
- ☐ Use a lintel so that no load (weight) bears down on top of the unit.



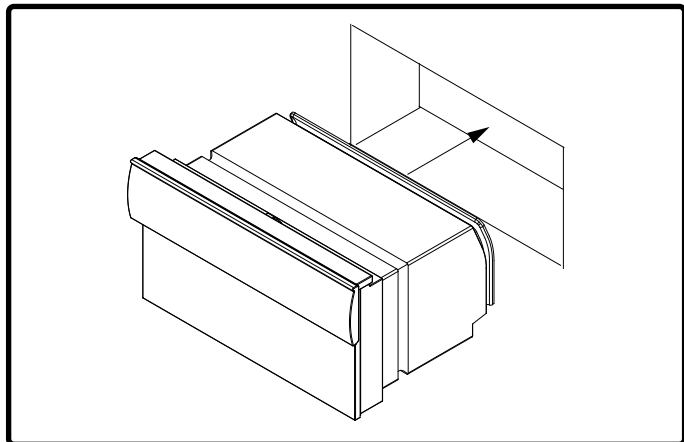
【4】Installation to an existing wall.

- ① Please make sure the opening for the unit is correct size.
- ② Please remove the rear door according to the instruction below. Please be careful not to lose the parts when removing the door.

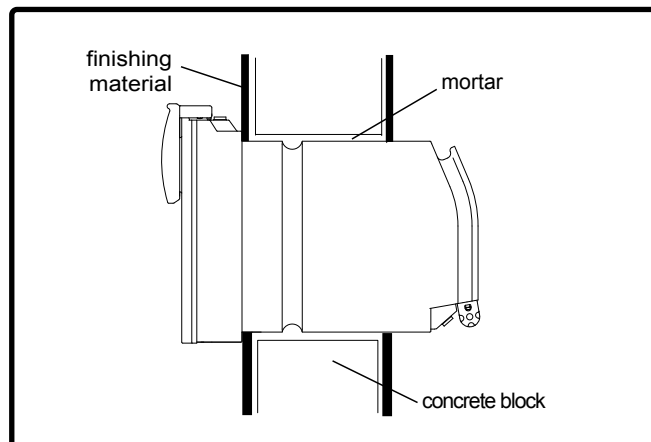


Order of installation

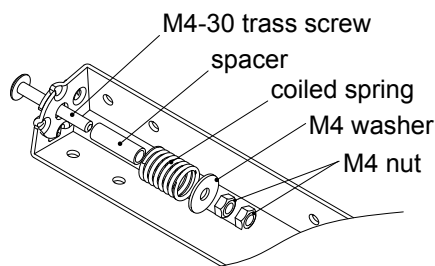
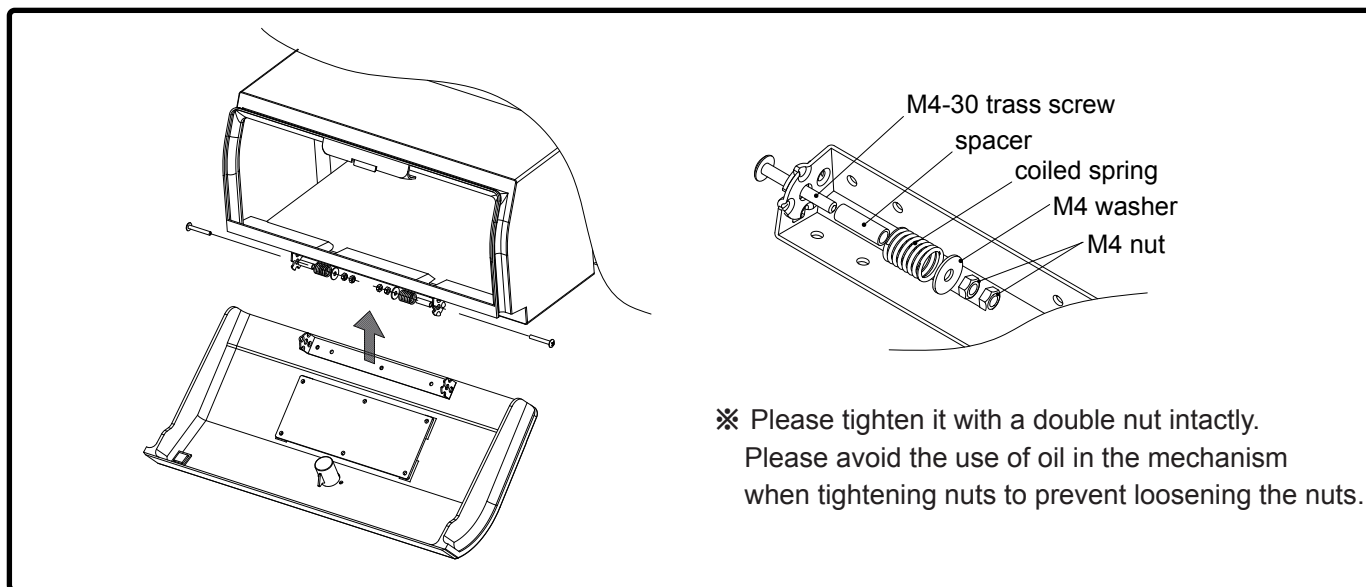
- ③ Insert the unit without the rear door towards the front section of the wall. (Please mount the unit with extra care to prevent damage.)



- ④ Fill up the gap with mortar or sealant while carefully mounting the unit to its position, and then complete the installation with finishing materials



- ⑤ Re-install the back door after curing the finishing material.



※ Please tighten it with a double nut intactly.
Please avoid the use of oil in the mechanism when tightening nuts to prevent loosening the nuts.

To our installation contractor

- Please do not modify the product.
- After installation, please check the adjustment.
- After installation, please check the function of door.
- After installation, please hand over the Manual, and dial key adjustment tool to customers.

To our valuable customers

- Please wipe with a wet rag for ordinary maintenance.
- Please use a weakened ph-balance detergent for major dirt and wipe off the detergent completely after washing.
- Please watch out for your fingers not being caught in slot cover.
- Please open and close the door slowly in order not to cause damage to the product.
- Please don't sit or stand on the unit in order not to cause injury.
- Please make sure not to use a solvent like thinner, benzene.
- Please use instruments like a soft brush for dust on the surface, to protect paints of the product.
- Please dispose the product as an ordinary inflammable waste according to the rules and regulations of concerned local government.

Maintenance Manual



Dea's Garden Thru-Wall Type(with combination lock)

To Valuable Customers:

Thank you so much for your purchase of Dea's Garden Product.

Please be sure to read this manual in order to use this product safely and properly.

Please keep this manual for future reference.

To our installation contractor / dealer :

The document is important, please give this manual to the customer after installing the product.

Attention and warning

The Markings  Prohibitions and  Warnings are extremely important.
Therefore please make sure to read and observe these prohibitions and warnings.
Failure to do so might cause accident or injury.



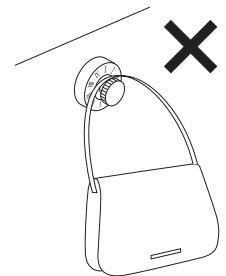
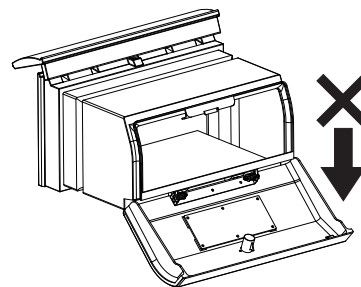
Prohibitions

- ◆ Please do not use the product continuously while it has been damaged, out of order or deformed as it might cause injury or accident.
- ◆ Please do not place something heavy on top of rear compartment, lean on it or hang on to it, as it might cause damage or accident.
- ◆ Please don't alter or modify the product.
- ◆ Please don't apply strong force on the unit, which may cause damage.
- ◆ Please keep away from flame.



Warnings

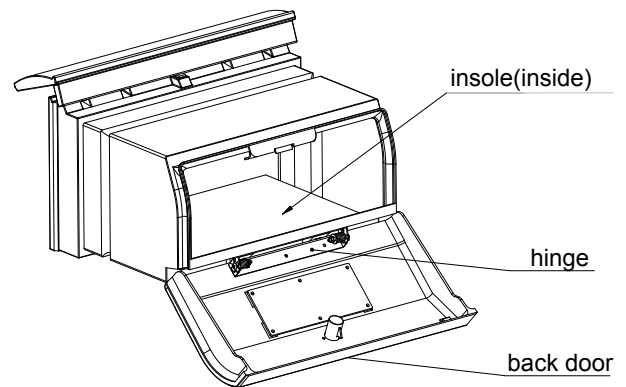
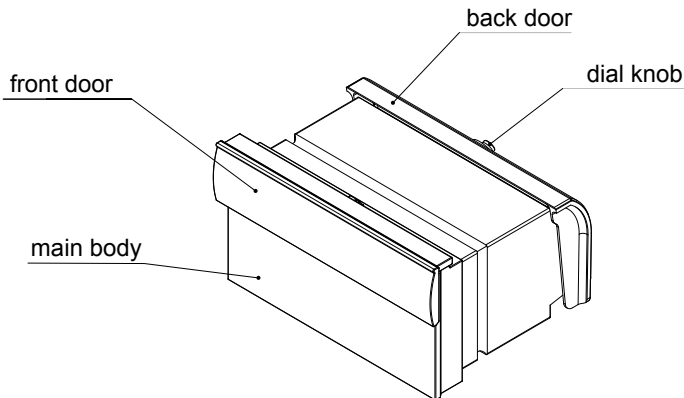
- ◆ Please do not apply strong force on the rear compartment while its door is open, it might cause breakdown of hinge.
- ◆ Please do not hang something like a bag on to its dial key.
- ◆ Please make sure front door is closed securely to prevent mail from wetting with rain.
- ◆ Please do not water the unit with hose as it may cause failure of its function.
- ◆ Please do not use the product for any other reasons but for accepting mail.
- ◆ Please remove mail, only when the door is open completely.
- ◆ After removing mail, please be sure to close its door.
- ◆ Please do not put your hand or fingers into slots of the unit, which might cause injury.



- ◆ When you remove mail, please watch out for your hand or fingers caught in slots or door.
- ◆ Protect unit from accidental damage, which will cause mis-alignment of door.

Name of Parts

□Parts names are common among all types.



How to use dial key

How to open

Step 1: Dial the ridged knob clockwise at least two times and stop on X.

Step 2: Dial the ridged knob counter clockwise and stop on VI.

Step 3: Pull door open with ridged knob.

Note: the knob itself does not pull out, use it only as a pull knob to open door.

How to close

Close the hinged door and turn ridged knob dial.

How to change the combination

Note: it is best to leave combination at factory setting,

but if you desire a new combination follow the below steps carefully.

IMPORTANT : READ ALL BELOW INSTRUCTIONS FIRST BEFORE ATTEMPTING TO CHANGE COMBINATION.

Step 1: Open the door following above "HOW TO OPEN" instructions.

Step 2: Insert the adjusting tool (included in this kit) under the back side of the lock as shown in Figure C.

Step 3: Push tool up and towards the front of the lock (towards ridged knob and dial face). This will push out the center of the ridged knob (portion with dot).

Holding the adjusting tool in place (while center of knob is pushed out), carefully lift the door so you can see the front of the dial face.

Step 4: Turn the center dot (that is still pushed out) to the new combination number you have chosen from the RIGHT side of the chart in Figure B.

When you have the dot lined up with your chosen number remove adjusting tool from the back side of the lock and push the center of the knob back into place making sure it is still lined up with your chosen number from the RIGHT side of the chart.

Note: other combinations out of the table in Figure B are not allowed.

Step 5: Write down your new combination in a safe place as we are not responsible for lost combinations.

Step 6: Tape adjusting tool to the instruction sheet or keep with instructions in a safe place for future reference.

Figure A

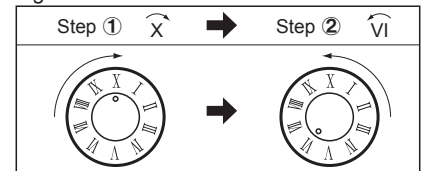
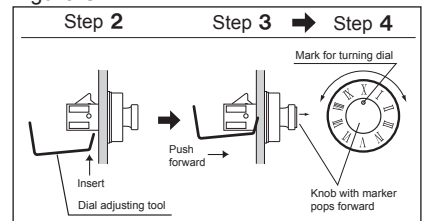


Figure B Table of available combinations

Step ①	to right →	Step ②	to left ←
X	→	VI	
I	→	VII	
II	→	VIII	
III	→	IX	
IV	→	X	
V	→	I	
VI	→	II	
VII	→	III	
VIII	→	IV	
IX	→	V	

Figure C



How to handle

●Please wipe with a wet rag for ordinary purposes.

●Please make sure not use thinner, benzene and so on.

●Please use a weakened ph-balanced detergent for major dirt.

●Please use an instrument like a soft brush for any dust on the surface.

*We are doing our best effort to keep the quality of our products with high and utmost standard.

If you noticed any problems, please report to the dealer where you bought the product.



Qualarc, Inc.

11300 Trade Center Drive, #A
Rancho Cordova, CA 95742
916-273-1576 phone
916-635-0228 fax
www.deasgarden.com