

Lewiston Mailbox Collection

Our Lewiston Collection is made from rust-free cast aluminum with a durable powder coat finish. Mix-and-match bases and finials to create a unique combination. For a finishing touch, add elegant cast aluminum address plates to the sides and front of the mailboxes. Builders and HOAs can personalize their address plates with a custom logo. Send us a sample of the logo for a free quote.



LMC-804 Cast Aluminum Mailbox: Shown in white with Fluted Base and Ball Finial.



LMC-804 Cast Aluminum Mailbox: Shown in black with Fluted Base and Ball Finial.



LMC-703 Cast Aluminum Mailbox: Shown in bronze with Ornate Base and Pineapple Finial. Mailbox 8-1/2" x 10" x 20" (optional address plates). 3" OD direct burial pole height 5' 2".



HF-17220 Hamptonville Outdoor Post Light: black or white finish, cast aluminum cage and finial, glass globes, brass and stainless steel components, hard-wired 110/120 volt, 8" x 17".



LPST-804-E1 Economy Mailbox: Shown in black with Fluted Base and Ball Finial.

Builders & HOAs, Personalize Your Mailboxes!

Your logo can be attached to your mailboxes. Fax us a sample of your design for a quote.



QUALARC®
www.qualarc.com
1-888-800-0153

Bayview Solar Lamp

The Bayview Solar Lamp comes ready to mount on any Lewiston mailbox pole. The Bayview's classic gas-light design features real beveled glass panes. With our super-bright LEDs and patented cone reflector technology, guests will easily spot your address at night. Using efficient solar-powered technology, the Bayview charges by day and automatically turns on at night. No wiring is needed. And with a weather and rust-resistant powder-coated cast aluminum frame, no maintenance is required.

Bayview Features:

- Mounts on any Lewiston mailbox pole.
- Solar powered, no wiring.
- Automatically turns on at dusk and off dawn.
- 6 Super Bright LED bulbs.
- Efficient Li-Ion rechargeable batteries included.
- Beautiful beveled glass.
- Patented cone reflector technology to create the brightest light possible.
- Durable, rust-resistant frame.
- Powder-coated black finish.
- Light Output: 80 lumens (approx.)
- Dimensions: 8.5" x 19"



Model SLBV-1106F



Mailbox Address Options

Our cast aluminum address plates are available in a wide range of color combinations. Please see our website for additional choices.



Bronze mailbox with antique bronze (gold numbers) side plate



Bronze mailbox with dark brown (gold numbers) side plate



Black mailbox with black (gold numbers) side plate



White mailbox with white (gold numbers) side plate



Economy vinyl address numbers available in gold, white or black



Choose a cast aluminum front plate with fleur-de-lis or address

Finial Options



#3 Pineapple

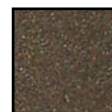


#4 Ball

Color Options



Black

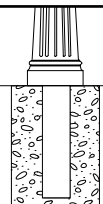


Bronze



White

Direct In-ground Base Installation
Heavy-duty underground aluminum base extension won't rust or rot.



Base Options



#7 Ornate



#8 Fluted



QUALARC
www.qualarc.com
1-888-800-0153