

Provincial Collection Brass Mailboxes



PROVINCIAL COLLECTION BRASS MAILBOXES

Rustic handcrafted old world charm comes to life in the Provincial Collection. These elegant mailboxes are handcrafted one at a time from heavy gauge brass and copper in the old world tradition.

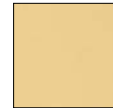
Products:

- A. MB400 (vertical) (8" W x 12-1/2" H x 3-1/2" D) (2.5 lb.)*
- B. MB500 (horizontal) (14" W x 8-1/2" H x 3-1/2" D) (3 lb.)*
- C. MB900 (roll top) (14-1/2" W x 10" H x 3-1/2" D) (4 lb.)*
- D. MB1000 (rural) (7-1/2" W x 8-1/2" H x 18" D) (6.5 lb.)**

* Optional magazine racks hang approximately 5".

** Add optional Lewiston post.

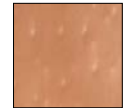
Finish Options



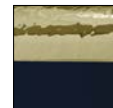
Polished brass



Antique hammered brass



Antique hammered copper



Antique hammered black bottom with hammered polished brass door

Note the brass mailboxes (polished, black bottom, or antique brass) have a lacquer finish to help protect them. The copper mailboxes do not have a lacquer finish and will form a natural patina over time.

Finish information: If you want a refined look, choose the polished brass finish. Please note our polished brass mailboxes are handcrafted the old fashioned way by skilled brass artisans. Due to this hand crafting, slight imperfections are a normal part of the fabrication and are not considered a defect. This is just the nature of the product and adds to the character of each mailbox. The polished brass finish will show imperfections more than the hammered finishes. If you want a rustic look, choose the hammered finish. The rustic antique hammered finish is hand hammered, scuffed, and buffed. Please note that this finish may show some scuff (sanding) marks. This is part of the rustic character of this finish and is not a defect.

Finish protection: To help preserve the polished finishes, we recommend a clear, no-buff car wax. Clean the mailbox periodically with warm soapy water and a soft cloth, rinse and dry with a soft cloth. Then apply no-buff car wax. Polished brass finishes are not recommended for corrosive salt-air locations.



Handcrafted Old World Charm

