

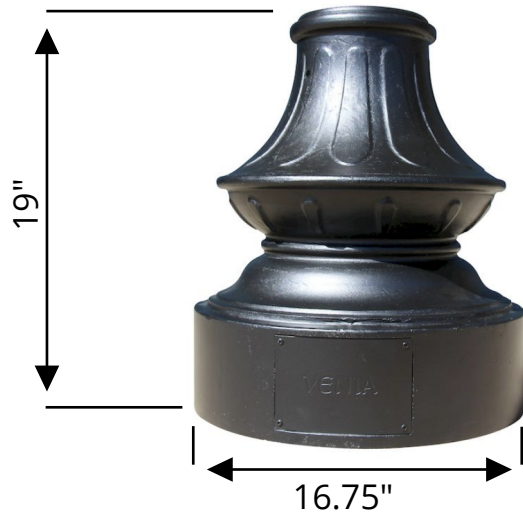
wider-open-base

BASE

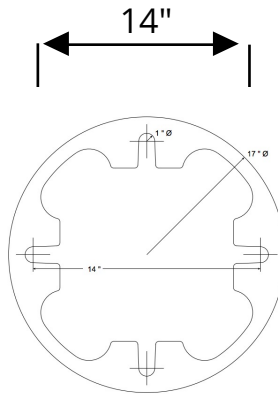


VENIA
LIGHTING

6" Opening

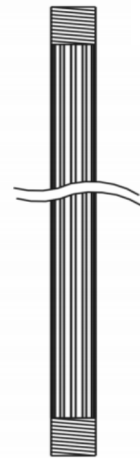


Base Measurements



Base Footprint

Circular base pattern requiring four (4) 5/8" anchor bolts



4" Opening

Optional Base Extension



6" Opening

Specifications

Color	Black
Material	Cast Aluminum
Style	Clifton Park
Weight	28 lbs
Sale Type	Wholesale
Intended Use	Neighborhood or Municipalities
General Category	Street Lights

Options

- Extensions
- 35"
 - 73"

